

REGION KEY MAP 1 C-1
SCALE: N.T.S

EXISTING PATHWAYS

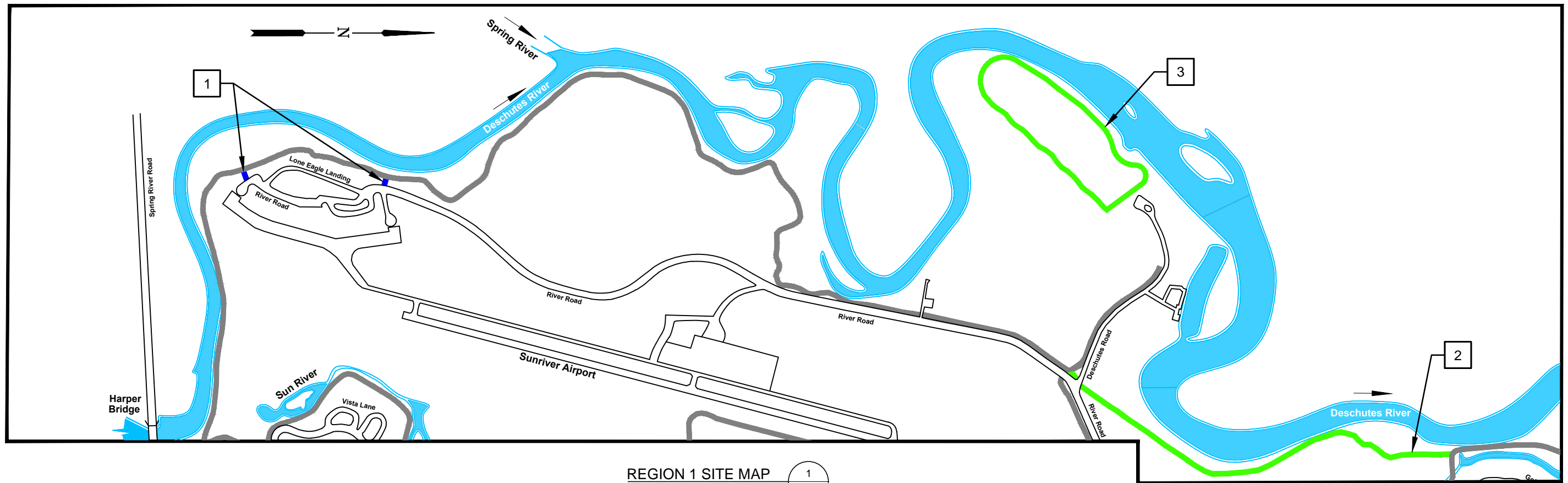
- SROA PATHWAY
- NON-SROA PATHWAY
- EXISTING TUNNEL

FUTURE PATHWAYS

- SAFETY
- ACCESS
- RECREATION
- PROPOSED TUNNEL



REGION KEY MAP



REGION 1 SITE MAP
SCALE: N.T.S.

1
R-1

FUTURE PATHWAY SEGMENT	FUTURE PATHWAY NAME	APPROX. LENGTH (MI)	COMMENT
1	RIVER RD. - SKYPARK AREA PATHWAY	0.04	IMPROVES ACCESS
2	DESCHUTES RIVER - LITTLE SUNRIVER BRIDGE TO DESCUTES RD. PATHWAY	0.85	ENHANCES RECREATIONAL ACCESS
3	McCALLUM PARK LOOP	0.75	ENHANCES RECREATIONAL ACCESS



OVERALL SITE MAP
SCALE: N.T.S.

2
R-1



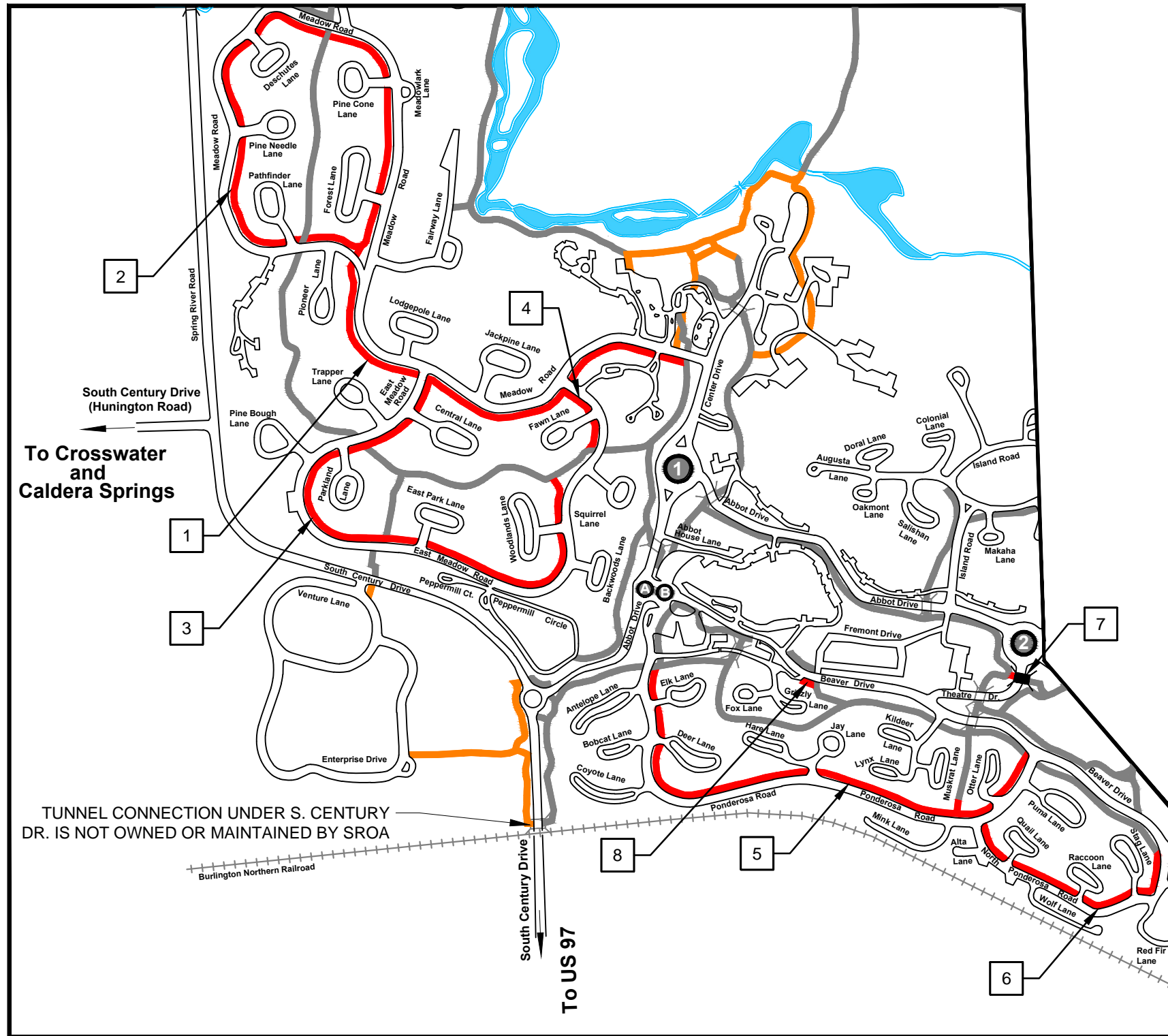
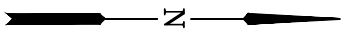
EXISTING PATHWAYS

- SROA PATHWAY
- NON-SROA PATHWAY
- EXISTING TUNNEL

FUTURE PATHWAYS

- SAFETY
- ACCESS
- RECREATION
- PROPOSED TUNNEL

REGION 1 SITE MAP



REGION 2 SITE MAP
SCALE: N.T.S. 1
R-2

FUTURE PATHWAY SEGMENT	FUTURE PATHWAY NAME	APPROX. LENGTH (MI)	COMMENT
1	MEADOW RD. - CENTER DRIVE TO FAIRWAY LN	0.61	IMPROVES SAFETY
2	MEADOW RD. LOOP	0.95	IMPROVES SAFETY
3	E. MEADOW RD. CRESCENT	0.75	IMPROVES SAFETY
4	E MEADOW RD. - CENTER DR. TO EXISTING E OF SAGE SPRINGS	0.11	IMPROVES SAFETY
5	S PONDEROSA RD.	0.73	IMPROVES SAFETY
6	N PONDEROSA RD.	0.33	IMPROVES SAFETY
7	FUTURE TUNNEL TO SHARC	N/A	IMPROVES SAFETY/ACCESS
8	GRIZZLY/FOX LN. TO FREMONT DR.	0.07	IMPROVES SAFETY



OVERALL SITE MAP
SCALE: N.T.S. 2
R-2



EXISTING PATHWAYS

- SROA PATHWAY
- NON-SROA PATHWAY
- EXISTING TUNNEL

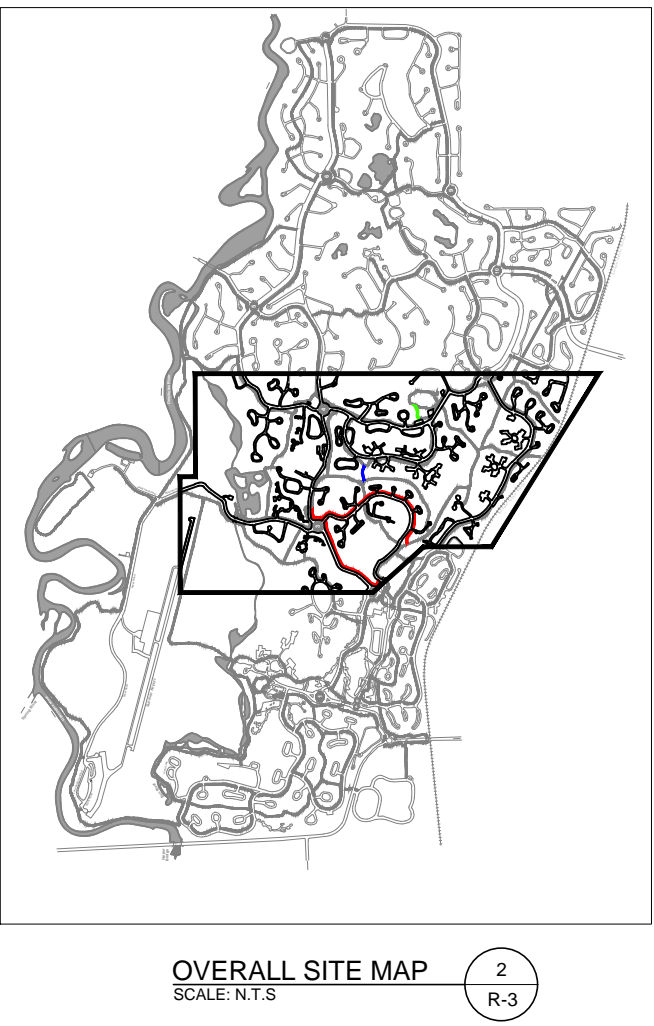
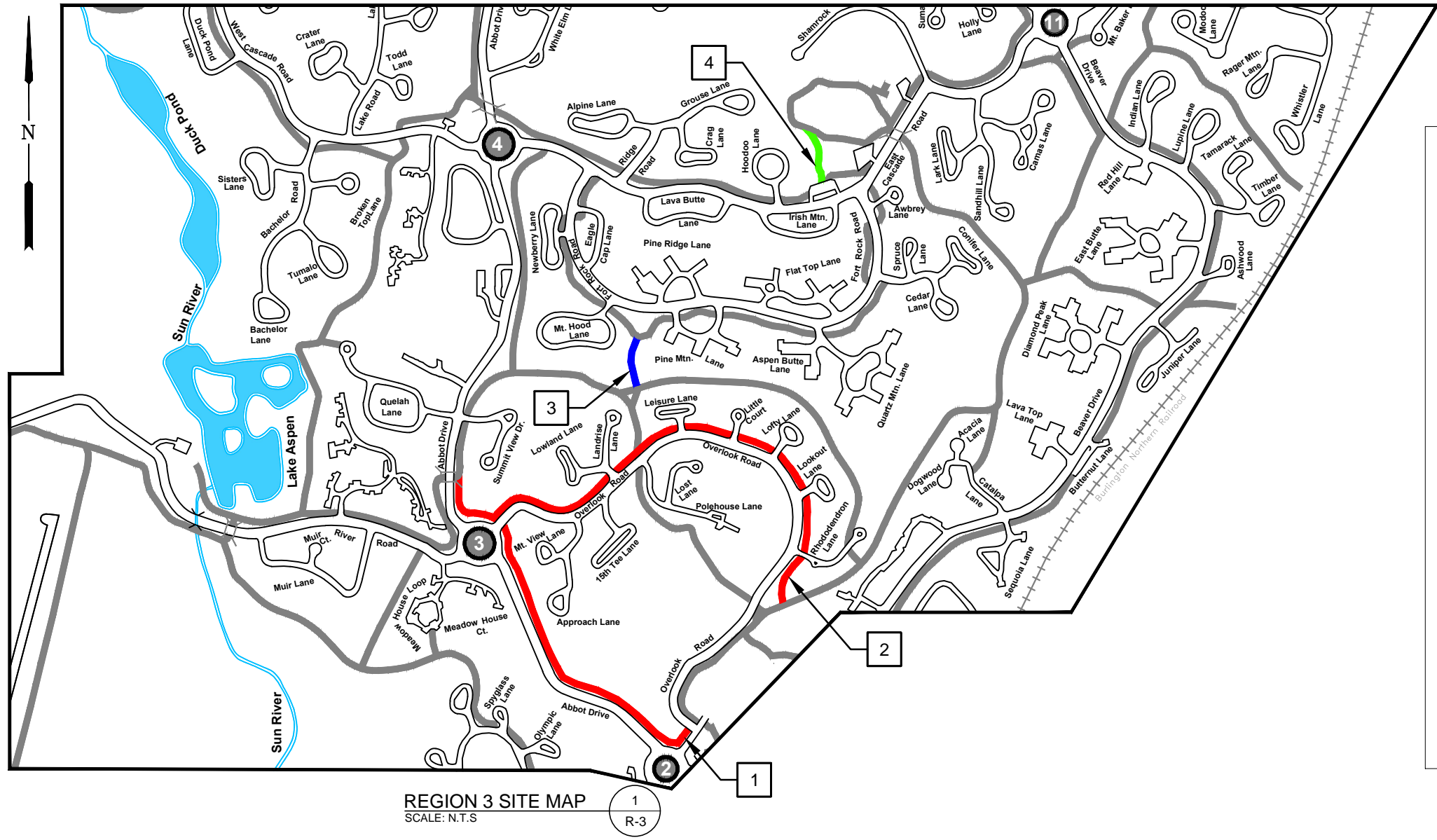
FUTURE PATHWAYS

- SAFETY
- ACCESS
- RECREATION
- PROPOSED TUNNEL

REGION 2 SITE MAP

FUTURE PATHWAY SEGMENT	FUTURE PATHWAY NAME	APPROX. LENGTH (MI)	COMMENT
1	ABBOT DR. - CIRCLE 2 TO CIRCLE 3	0.43	#1 SAFETY PRIORITY IN SROA
2	OVERLOOK RD.	0.73	IMPROVES SAFETY AND ACCESS
3	FORT ROCK RD. TO OVERLOOK RD.	0.07	IMPROVES ACCESS
4	FORT ROCK PARK - WEST AREA	0.06	ENHANCES RECREATIONAL ACCESS

NOTE: MAP ORIENTATION HAS BEEN ROTATED TO FIT PAGE. NORTH IS AT THE TOP OF THE PAGE

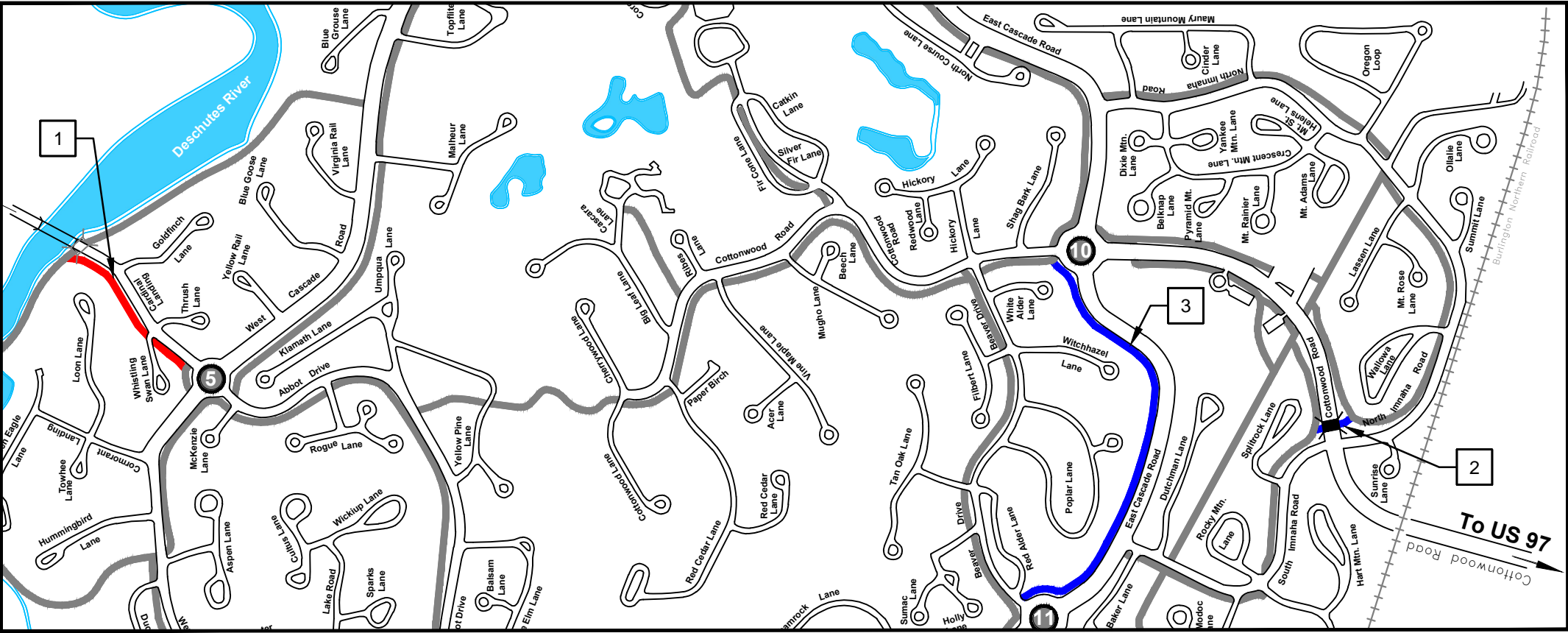


EXISTING PATHWAYS		FUTURE PATHWAYS	
SROA PATHWAY		SAFETY	
NON-SROA PATHWAY		ACCESS	
EXISTING TUNNEL		RECREATION	
		PROPOSED TUNNEL	

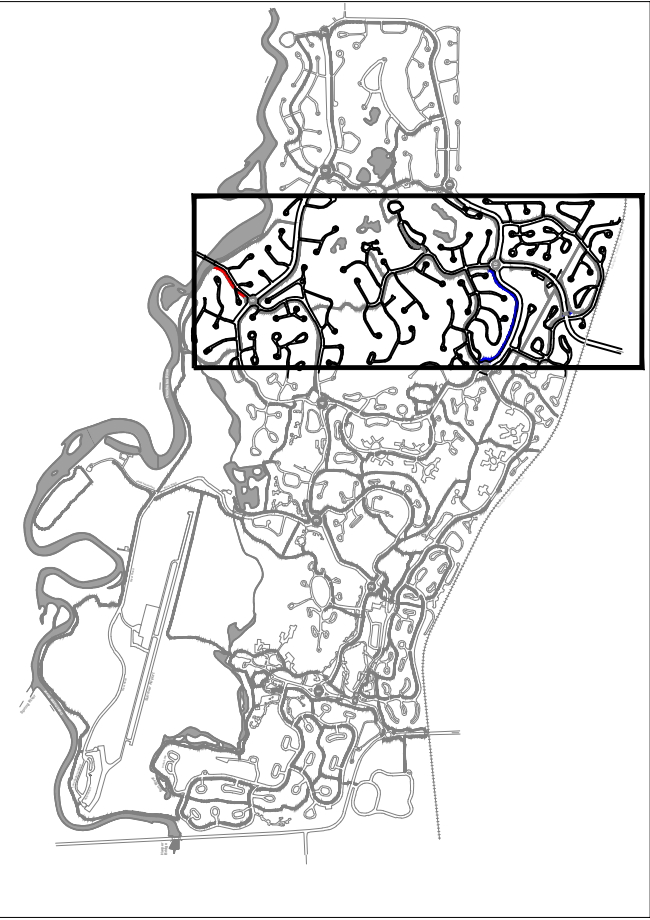
REGION 3 SITE MAP

FUTURE PATHWAY SEGMENT	FUTURE PATHWAY NAME	APPROX. LENGTH (MI)	COMMENT
1	CARDINAL LANDING - CIRCLE 5 TO BRIDGE	0.20	IMPROVES SAFETY
2	COTTONWOOD RD. - IMNAHA RD. & MARKETPLACE FRONTAGE	0.02	POTENTIAL TUNNEL TO IMPROVE ACCESS
3	E CASCADE RD. - CIRCLE 10 TO CIRCLE 11	0.58	IMPROVES ACCESS

NOTE: MAP ORIENTATION HAS BEEN ROTATED TO FIT PAGE. NORTH IS AT THE TOP OF THE PAGE



REGION 4 SITE MAP
SCALE: N.T.S. 1 R-4



OVERALL SITE MAP
SCALE: N.T.S. 2 R-4

EXISTING PATHWAYS

- SROA PATHWAY
- NON-SROA PATHWAY
- EXISTING TUNNEL

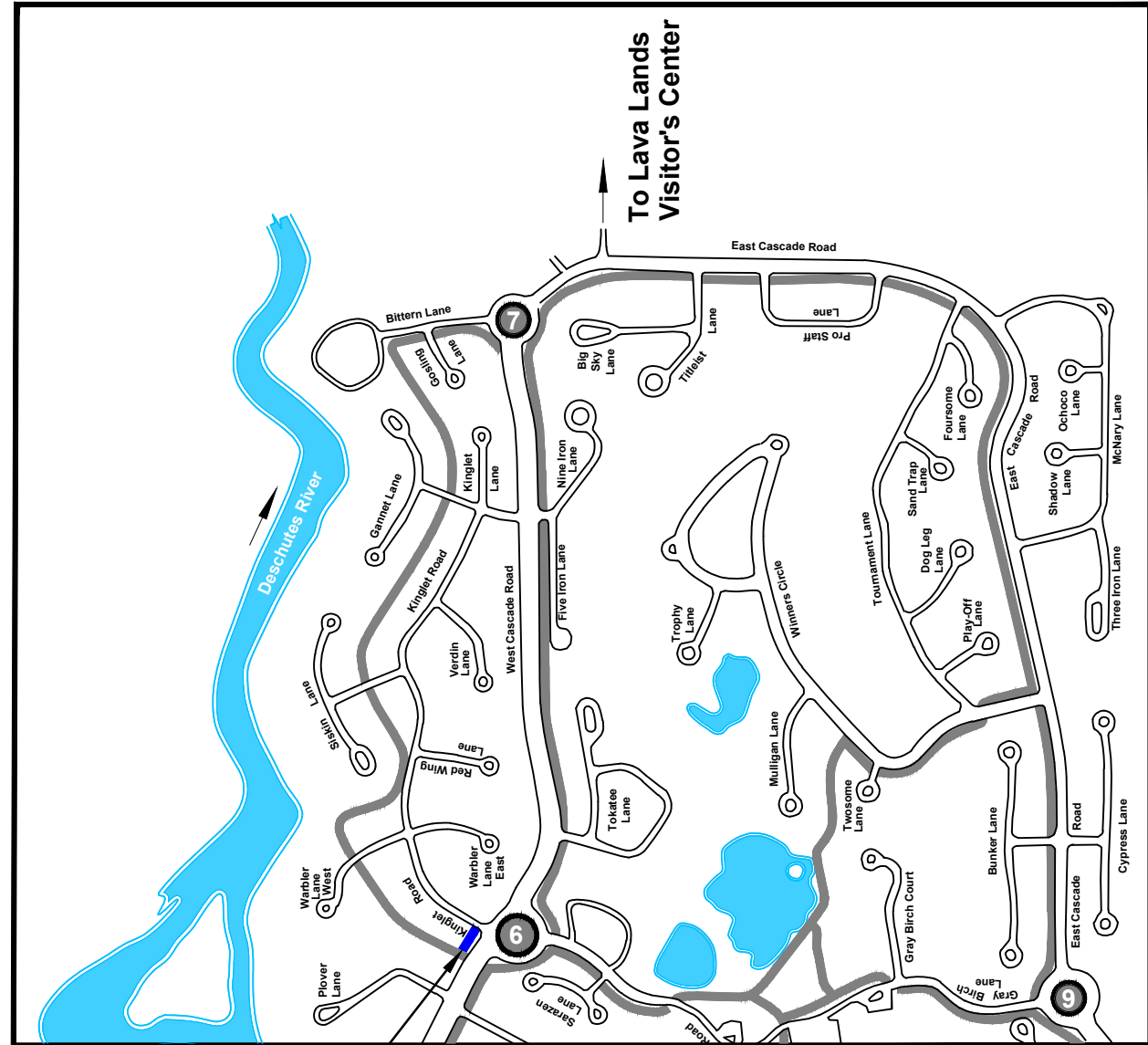
FUTURE PATHWAYS

- SAFETY
- ACCESS
- RECREATION
- PROPOSED TUNNEL



REGION 4 SITE MAP

NOTE: MAP ORIENTATION HAS BEEN ROTATED TO MAINTAIN CONSISTENCY WITH R-3 & R-4 MAPS. NORTH IS AT THE TOP OF THE PAGE



REGION 5 SITE MAP
SCALE: N.T.S.

1
R-5

FUTURE PATHWAY SEGMENT	FUTURE PATHWAY NAME	APPROX. LENGTH (MI)	COMMENT
1	W CASCADE RD. - KINGLET RD CONNECTION	0.03	IMPROVES ACCESS



OVERALL SITE MAP
SCALE: N.T.S.

2
R-5



EXISTING PATHWAYS

- SROA PATHWAY
- NON-SROA PATHWAY
- EXISTING TUNNEL

FUTURE PATHWAYS

- SAFETY
- ACCESS
- RECREATION
- PROPOSED TUNNEL

REGION 5 SITE MAP